

Engine output : **26 PS**

Machine operating weight : **1480 kg**

**For Earth, For Life**  
**Kubota**

# *RT140*

**KUBOTA WHEEL LOADER**



# POWERFUL, MANOEUVRABLE AND VERSATILE

Kubota has developed new range of articulated wheel loaders with an operating weight ranging from 1000 kg to 2800kg. The new RT-series has been designed to meet the requirements of varying type's of applications such as construction, agriculture, gardening and public works. These articulated wheel loaders combine performance, compactness, safety and comfort as with all Kubota's products.



## KUBOTA ORIGINAL ENGINE: POWERFUL, EFFICIENT AND LOW EMISSION

Kubota engine is known for its reliability and durability. It is strong and powerful with respect for the environment especially for noise and emissions.

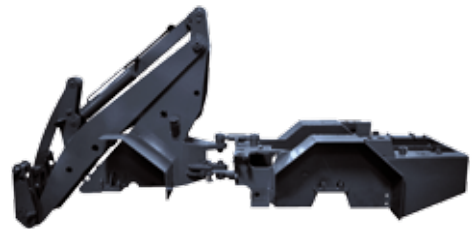


## HYDRAULIC MOTOR ON EACH AXLE

The RT140 is equipped with hydraulic motors that ensure powered drive on each axle.

## PIVOTING ARTICULATION

With an articulation of 45° and an oscillating angle of 5°, the RT140 can drive through tight space's without creating any damage on the ground surface.



## HEAVY DUTY CHASSIS

The thickness of the material used, the load resistance and the compactness are the key features of the chassis of the RT-series. In addition, the hydraulic tank is enclosed within the frame which provides additional counterweight.



## HYDROSTATIC TRANSMISSION (HST)

The hydrostatic transmission is equipped with an high performance pump which guarantees an efficient transmission of the power to the wheels.



# OPERATOR COMFORT



## **Dashboard**

The dashboard provides the operator with easy to read guages for both the fuel level & engine water temperature and with additional warning lights for Engine oil pressure, water temperature and battery charge. Therefore you can operate your wheel loader in full confidence.

## **Multi-function operating lever and steering column**

The user friendly designed multifunction lever allows to control all the main functions of your articulated wheel loader: shuttle switch, auxiliary circuit (according to the versions) and of course the front attachment functions. The steering wheel is tiltable in order to offer the best driving position to the operator.



## **Comfort seat**

In order to insure a good operating comfort and safety, the seat is equipped with arm rest and safety belt.

# PERFORMANCES / ENTRETIEN



## Versatile and compact

With an operating weight of 1480 Kg and a tipping load of 580 kg (straight position) the RT 140 is a versatile articulated wheel loader very well appreciated for farming.

## Transmission control

The hydrostatic transmission is controlled by a pedal located on the right side of the steering column. A simple action of the right foot on the pedal acts simultaneously on the engine rpm and also on the hydrostatic pump. The operator can control the travel speed with full concentration on the front attachments being used.



## Daily maintenance

The main components which require daily check such as engine oil level, coolant level, air filter and radiator are easily accessible, thanks to the wide opening engine bonnet. In addition, the offset battery off terminals allow a quick starting assistance in the event of a battery default.

# SAFETY / SECURITY



## Lighting equipment

Road lights are mounted as standard equipment in order to meet the requirements of road legislation. In addition, working lights located on the front frame (standard) or on the safety structure (option) insure safe working conditions during both night & day.

## Safety canopy

The RT140 is available with a canopy. The protective structure is certified ROPS ISO3471 and FOPS ISO3449.



## Counterweight

The counterweight is integrated in the rear part of the frame. An additional counterweight of 90 Kg is available as an option to improve the stability.



## STANDARD EQUIPMENT

### Fuel system

- Kubota original engine
- Double-element air cleaner

### Transmission

- Hydrostatic Transmission - 4 wheel drive
- Drum parking brake

### Hydraulic system

- High performance hydraulic pump
- Locking lever of all front attachment hydraulic functions
- Inching and brake pedal
- Shuttle switch F/R on the multifunction lever

### Deluxe version

- Canopy with safety doors
- 4 working lights
- Adjustable comfort seat equipped with armrest, backrest and headrest
- Retractable seatbelt
- Complete dashboard
- ROPS (Roll-Over Protective Structure ISO 3471 )
- FOPS (Falling Object Protective Structure ISO 3449)
- Auxiliary circuit 1, double acting mechanically activated
- Auxiliary circuit 2, double acting electrically activated
- Road kit (lights and mirrors)
- Documents compartment

- Tilttable steering column
- Additional counterweight 90 Kg with towing hook
- Tires 26 x 12.00-12 SKID (Industrial)

### Standard version

- Canopy with safety doors
- Adjustable comfort seat equipped with armrest, backrest and headrest
- Retractable seatbelt
- Complete dashboard
- ROPS (Roll-Over Protective Structure ISO 3471)
- FOPS (Falling Object Protective Structure ISO 3449)
- Auxiliary circuit, double acting mechanically activated
- Road kit (lights and mirrors)
- Adjustable steering column
- Documents compartment
- Tires 26 x 12.0-12 SKID (Industrial)

### Working equipment

- Working light on front frame
- Hydraulic quick coupler

### Safety

- 4 tie down points
- OPC / Operator presence seat switch
- Articulation locking bar
- Battery isolator switch
- Towing hook

## OPTIONAL EQUIPMENT

- Foldable safety roof
- Leak oil connection
- Low Pressure Return
- Hand throttle
- Hand inching
- Additional working light
- Beacon light
- Auxiliary circuit, double acting mechanically activated
- Auxiliary circuit, double acting electrically activated
- Mudguard extensions
- Single/double side stop on auxiliary circuit
- Shock absorber for lift arm
- Additional counterweight 90 kg
- Special colour
- Various bucket and other attachment on request

*For further information consult your local dealer.*

Optional tires	Width machine (mm)
27x8.5-15	970
26x12.00-12 AS	1100
26x12.00-12 Gazon	1100
300/60x12 X-trac	1100

## ACCESSORIES



### Quick coupler

RT140 is equipped with hydraulic quick coupler for easy and fast change of attachments.

*non contractual colours*

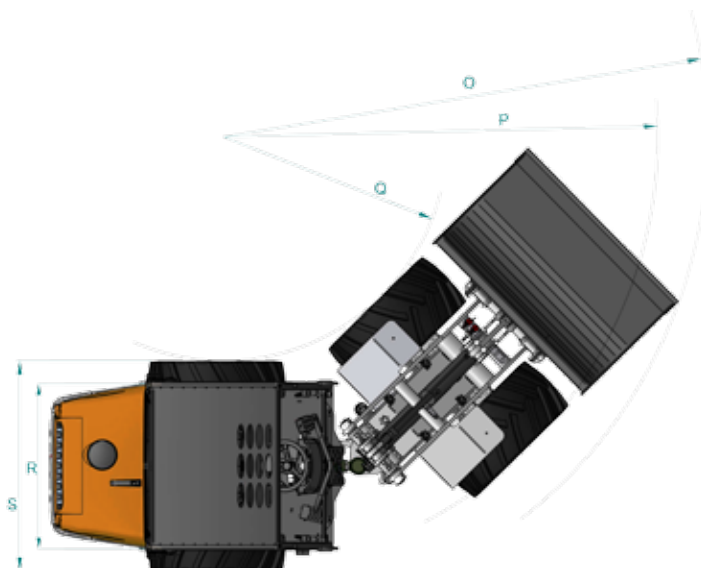
## SPECIFICATIONS

Model				RT140	
Operating weight			kg		1480
Earth bucket capacity			m <sup>3</sup>		0,32
Engine	Make			KUBOTA	
	Model			D1105	
	Power	PS/rpm		26/2050	
		kW/rpm		19/2050	
	Number de cylinders			3	
	Displacement		cc		1123
Cooling type			water		
Transmission	Type			Hydrostatic	
Performance with pallet fork	Tipping load with pallet fork in straight position (ISO14397)	A	kg	800	
		B	kg	580	
		C	kg	430	
	Tipping load in full turn position (ISO14397)		kg	340	
	Lifting capacity		kN	10,0	
	Breakout force		kN	15,0	
Tires	Type			SKID	
	Dimensions			26x12.0-12	
Travel speed			km/h		0~12
Articulation angle			deg.		± 5.0
Auxiliary circuit	Oil flow		ℓ /min		42
	Oil pressure		bar		150
Capacity	Fuel tank		ℓ		25
	Engine oil		ℓ		4,2
	Hydraulic tank		ℓ		46
	Cooling system		ℓ		4

## DIMENSIONS

Machine dimensions*	A	Wheel base	mm	1368
	B	Overall length without bucket	mm	2669
	C	Overall length with bucket	mm	3360
	D	Seat height	mm	1140
	E	Overall height	mm	2170
	F	Front frame height	mm	1560
	G	Dumping height	mm	1825
	H	Max. height at hinge pin	mm	2560
	I	Max. lifting height at bucket	mm	3140
	J	Roll back angle at ground level	deg	41°
	K	Roll back angle at max. height	deg	52°
	L	Dumping angle	deg	44°
	M	Rear climbing angle	deg	27°
	N	Diameter of standard wheel	mm	670
	O	Turning radius with bucket	mm	2260
	P	Turning radius (outer wheel)	mm	1900
	Q	Turning radius (inner wheel)	mm	1040
	R	Tread	mm	815
	S	Overall width	mm	1100
	-	Articulation angle	deg	45°
	-	Ground clearance	mm	180

★ The data have been measured on the standard version.  
Specifications are subjects to be changed without notice.



★ All image's shown are for brochure purpose only.  
When operating the wheel loader, wear clothing and equipment in accordance to local legal and safety regulations.

### KUBOTA EUROPE S.A.S.

19 à 25, Rue Jules - Vercruysse -  
Zone Industrielle - B.P. 50088  
95101 Argenteuil Cedex France  
Téléphone : (33) 01 34 26 34 34  
Télécopieur : (33) 01 34 26 34 9  
<http://www.kubota-global.net>

W21PS02277